

Dear AWRC Sisters and Brothers,

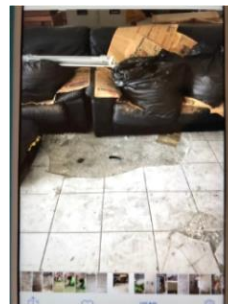
Warm greetings from AWRC in Taichung, Taiwan.

With the IGI June 2018 published, we are taking the opportunity of giving the updates to our church partners, members, readers and subscribers.



### Relocation of the AWRC Office

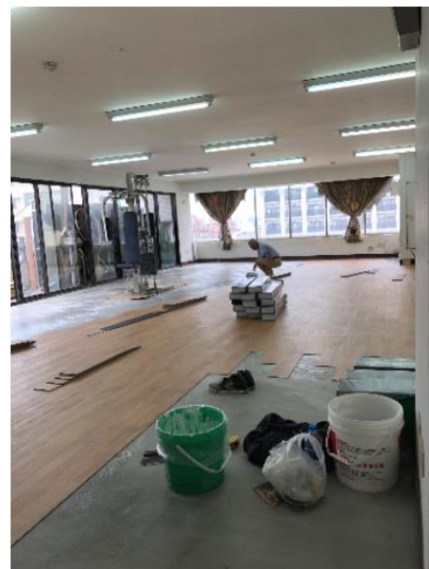
“All things are difficult before they are easy” is a Chinese saying 萬事起頭難 (Wan Shi Qi Tou Nan).



Shi Qi Tou Nan). The relocation of the AWRC office from India to Taiwan at times definitely felt like a difficult “birthing”

experience! It took several months of inquiring and looking to find the suitable space as well as the practical

location to rent, by God’s grace it was finally settled. Many, many thanks go to the Min-Chu-Lu Presbyterian Church! Even though the church was without a pastor and AWRC was totally new to them, the elders and deacons received us with open hearts. Not only did they agree to share half of the unused office floor but willingly gave a helping hand with the repair work! As seen from the pictures the broken floor-tiles were removed and the space was renovated with a new face. We feel humbled and grateful.





The “new baby” had to be clothed! Again the Lord answered our prayers! Shui-Nan Presbyterian Church donated furnishings like iron cabinet, magazine stand, office chairs and tables while Zhong-Chin Presbyterian Church, comprising around 20 congregants, who



incidentally are still paying back their loan for newly bought church, heard of AWRC needs and gave us a Four-in-One printer – such open hands. Last but not the least, many male friends gave their time and strength to move the rubbish and bring the furnishings into AWRC office. Without all these precious contributions, we could not have the beautiful AWRC office space, as you see from the pictures, in Taichung.

### Registration

With one more hurdle to cross, knowing the fact that without a bank account AWRC could not function and operate, the Working Group(WG) at large decided last August to have AWRC registered as an international entity. Because in order to open a bank account in Taiwan NGOs need to be formally recognized and registered with the Taiwan Ministry of Interior (MOI). This requirement is understandable for credibility and accountability. While the whole process is not too hard still it is indeed time-consuming and the administration cumbersome. To meet requirements from the MOI, we are to hold five meetings with documentations for submission.



Nevertheless, we took it as golden opportunity to introduce AWRC to all promoters from seven different cities of Taiwan. Local group is, therefore, on the way of being formed as we outreached to sisters and brothers from lay persons, pastors’ wives, evangelists and pastors. We invited current



member Lin Ni-Ling to share her encounter as well as

experiences with AWRC, also Nancy Lin who stressed the importance of sisterhood, giving encouragement to all sisters in the meeting.



### **Prompt Assistance of the Presbyterian Church in Taiwan (PCT)**

PCT, the oldest and biggest Protestant denomination in Taiwan, has given much needed help to AWRC in its time of need. Without any hesitation, General Secretary Rev. Lyim Hong-Tiong agreed PCT General Assembly office could assist by receiving payments/ grants designated for AWRC in the interim period as we wait for the MOI approval as an association which will eventually enable us to open a bank account. Much appreciation to PCT and all colleagues engaged in the assistance. AWRC could not have come so far without all your support and help.

### **in God's image (IGI)**

No matter AWRC was facing great challenges and unexpected difficulties during the relocation we were determined to have IGI of June 2018 and Dec 2018 published. Earnest thanks to the Editorial Advisory Committee and Guest Editor Arche L. Ligo. All the collective work of their taking time, heart and tireless efforts, without hesitation to accept the role, have indeed made the impossible issue realized. Encouraging women to think, write, and reflect has always been one of our main concerns and task. We welcome all responses and suggestions with regard to IGI.



### **Receiving Patti from the United Church of Canada (UCC)**

In November Patti TALBOT from the UCC, after attending Taiwan Ecumenical Forum meeting in Hsin-Chu, came down to Taichung to pay AWRC office a visit. As a long term church partner Patti expressed concern for the current situations of

AWRC. During the short visit Patti and Showin exchanged ideas and dreams for AWRC's future, confirming the strong bond of partnership between each other.

### **Gratitude and Expectations**

A threefold cord is not quickly broken. I have become more strong and tenacious since taking up the responsibility as the AWRC new coordinator. Special thanks to WG at large and Coordinating Team Members (CTM), comprising of Eun-Joo LEE, Nelun Chrisanthi GUNASEKERA, Ni-Ling LIN, Sonia GEORGE, Hisako KINUKAWA, Ting-Jin YONG, Christina WONG, Htoo Htoo MARK and Yoke Heng YOON. Representing different areas of Asia, they have been so supportive and accompanied me by demonstrating communicative cooperation, instead of hierarchical or dominating attitudes that we used to experience. In addition to maintaining AWRC as the very precious resource platform and center for Asian Women, one of my expectations is to provide wider promotion of AWRC especially among younger Asian women. Also, I would love to explore and develop a collective model of working together between various feminist groups of Asian women who come from different faiths and cultures. It is with the network and collaboration of Asian women, local and international, the seed of women doing theology will continue taking root, sprouting, flowering and blossoming.



CHAN Hsiu Yin (Showin)  
Coordinator